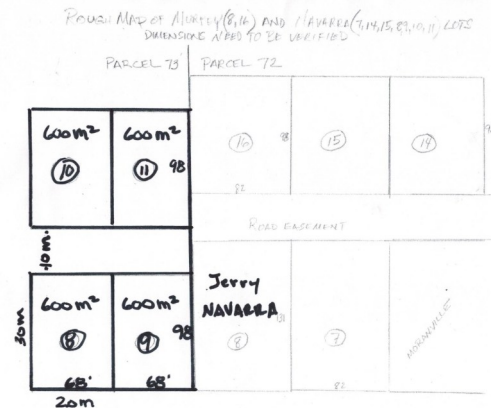


\$110,000 USD / 2400M² - 40 METERS OF OCEAN FRONTAGE



MULEGE PROPERTIES EXCLUSIVE

Fabulous white sand beach! (2) two - 20m x 30m = 600m² x 2 lots = 1,200m² for both lots combined and 40 meters of shoreline on the Sea of Cortez. These two lots are held in an assumable Fideicomiso. There are two(2) second row 20m x 30m each lots totaling 1,200m² also held in a assumable Fideicomiso included in the asking price. These four lots are accessed by a 10 meter wide road which dead end into the property creating a Cul-de-sac and there is pre-approval to place a gated entry for even more privacy and security. Punta Chivato is an area of 150 custom homes, is 100% solar, and a there's the convenience of a metered water system that is piped to the parcel. Let us help you design and build your



Sea of Cortez



Contact:

Robin 615 103 3546 robin@mulegeproperties.com.mx

Jose 615 112 1092 phoenix1281@ymail.com

Office 615 153 1035

See more at: mulegeproperties.info